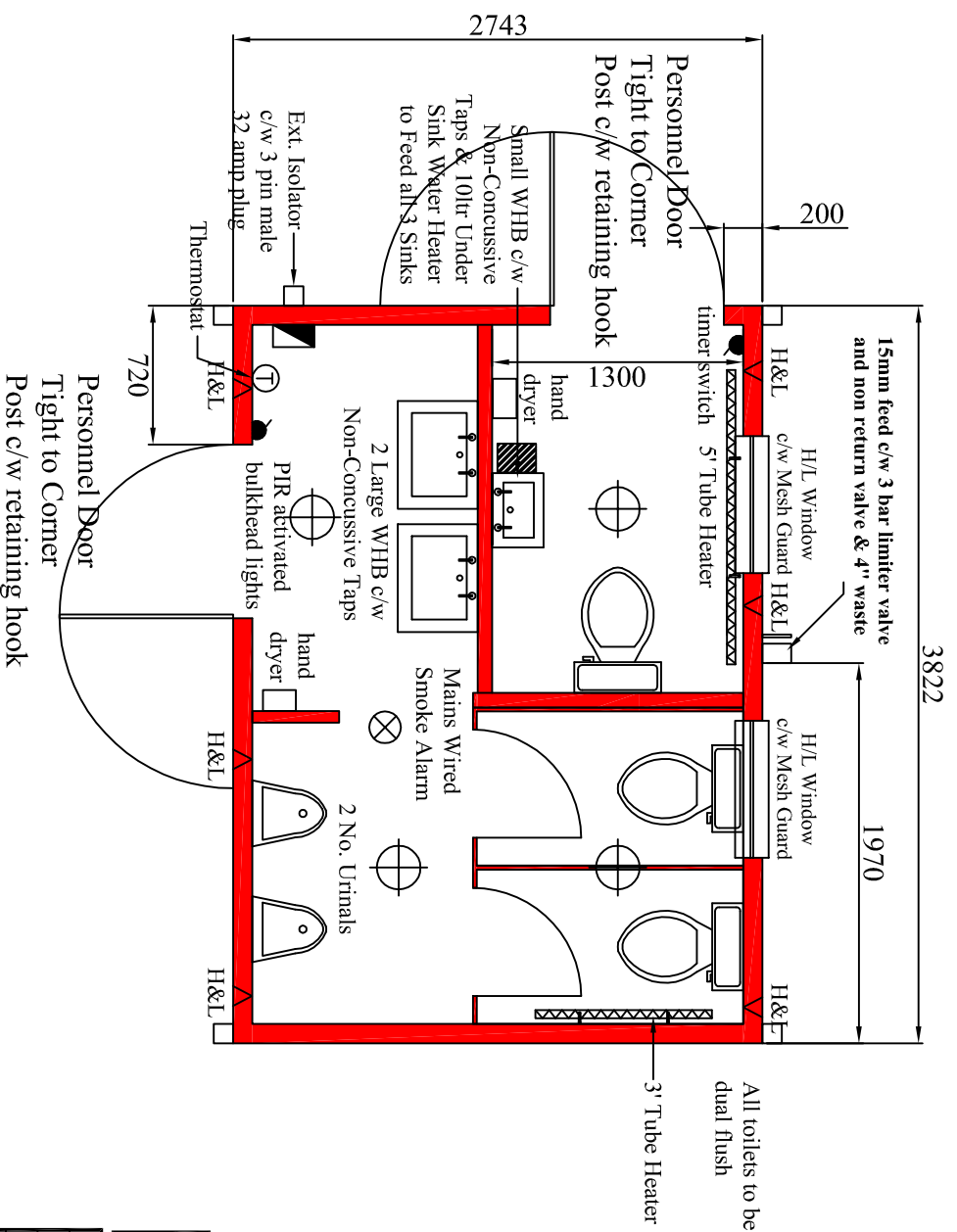


Title: AGS 13 x 9 2+1 WC



Notes
 HL Sockets - 1200mm FFL.
 Standard Sockets - 300mm FFL.
 Spurs for Water Heaters - 1500mm FFL.
 Spurs for Wall Heaters - 300mm FFL.

Drawing No.	Stack-0264
Job No.	
Checked and signed off by:	
Customer:	
Sales:	
Production:	

Amendments/Additions to Specification	
Jacklegs Welded to Corner Posts (If Required)	
All doors are external removable steel doors	Ceiling Panels CSM10
Jacklegs and Hand driers to be provided	
LYDNEY PROFILE	

Fittings	Y	N	initials
Jacklegs			
Forkpockets			
General Spec type			initials
wallboards	EGB-52		
Flooring	Polyfloor - Grey		
Flat/profiled			

This drawing is the property of STACKRIGHT LTD and must not be reproduced or copied in whole or in part without the prior written consent of STACKRIGHT LTD.

ISSUE	DATE	AMENDMENTS	DRAWN BY

